



PHEASEY PARK FARM
Primary School &
Early Years Centre

**Information about the Year 6
Secondary Transfer and Curriculum**

Thursday 18th September 2024

Staff

Miss. A. Yoncaci - Year Leader

Mrs. S. Baynham - Class Teacher

Mrs. R. Nelson - Class Teacher

Mrs. D. Binnion - Teaching Assistant

Mrs. A. Kirk- Teaching Assistant

Mrs. N. Wilcox - Learning Mentor

Mrs. D. Francis - Learning Mentor

Mrs. S. Mayou - Assistant Head Teacher and
SENCo. Y5/Y6

Mrs. E. Watson- Assistant Head Teacher.
Safeguarding Lead & English Lead. Y5/Y6

Transfer to Secondary School September 2024

Secondary School Applications for Walsall Council have provided the information below to help parents make their Secondary School applications:

- ▶ The Secondary Admissions 2024 round is now open, and the closing date is the **31st October 2024**.
- ▶ Important information is provided online by Walsall Council. This will assist you during the process of Secondary Admissions including details of local schools and open days.
- ▶ To make an application for a Secondary School place, you will need to go to [Apply for a secondary school place | Walsall Council](#).
- ▶ If you live outside Walsall, you should complete an application from your home local authority - even if you are applying for a Walsall school.

Before making your online application, it is recommended that you do the following:

- ▶ Explore school websites.
- ▶ Read school admissions policies and entry criteria to help you understand how places are allocated.

Transfer to Secondary School September 2024

- ▶ It is not a first come first served basis providing you get your application in by the closing date.
- ▶ The closing date is [31.10.2024](#).
- ▶ If you apply late, you may not get a place at one of your preferred schools.
- ▶ Where this is the case, you will be allocated a school that has places - this may not be near to your home.
- ▶ You are advised **NOT** to put just one preference - it is better to use up to the five preferences allowed.
- ▶ All queries relating to the application process should be directed to the admissions department in your local authority.

The Admissions and Education Sufficiency Team are available to support you through the application process and can be contacted via email at schooladmissionsadvice@walsall.gov.uk

Tel: 01922 652585



Walsall Council

<https://go.walsall.gov.uk>

Apply for a secondary school place

The closing date for applications is 31 October 2024. If you apply late, you may not get a place at one of your preferred schools. If you live outside Walsall, ...



Walsall Council

[Sign in / Register](#)

Your [feedback](#) helps us to improve our website.

[Home](#) > [Schools and learning](#) > Apply for a secondary school place

Apply for a secondary school place

September 2025 admissions: The portal for making your application will be open from 2 September to 31 October 2024.

On this page

[Overview](#)[Before you apply](#)[Deciding on your school preferences](#)[Apply for a secondary school place](#)[Get support with making your application](#)[Supplementary application forms](#)[When you'll receive your offer](#)

What to do:

Secondary admissions 2025 - key dates

Date	Details
2 September 2024	'Information for Parents September 2025' booklet available online
2 September 2024	Portal for September 2025 applications opens
31 October 2024 (10pm)	Closing date for on-time applications
1 - 29 November 2024	Late applications received within this period may be considered as on time but only in exceptional circumstances (see 'Information for Parents' booklet for more information).
30 November 2024	All applications received from this date forward will be considered late regardless of the circumstances
3 March 2025	National Offer Day - all on-time applicants will be offered a secondary school place for September 2025
21 March 2025	Waiting list positions available
24 March 2025	Late offers (phase 1): Offers made for late applications received between 1 November 2024 and 5 March 2025
12 May 2025	Late offers (phase 2): Offers made for late applications received between 6 March and 23 April 2025
16 June 2025	Late offers (phase 3): Offers made for late applications received between 24 April and 30 May 2025
As required	Further offers for late applications will be made as required
June/July 2025	Appeal hearings - dates to be confirmed to applicants as appropriate
June/July 2025	Inset dates - to be confirmed by the school

Year 6 Curriculum

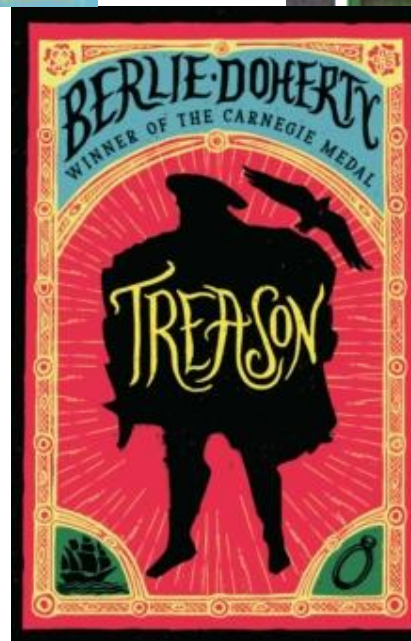
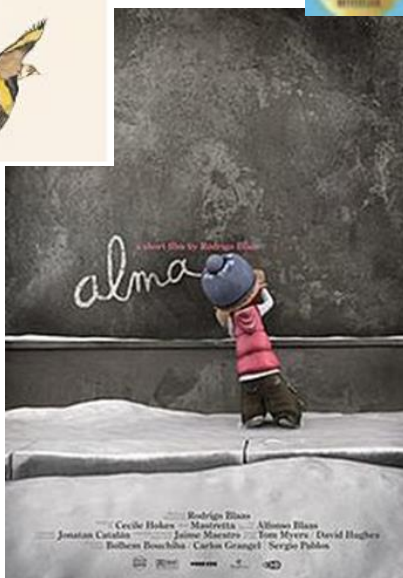
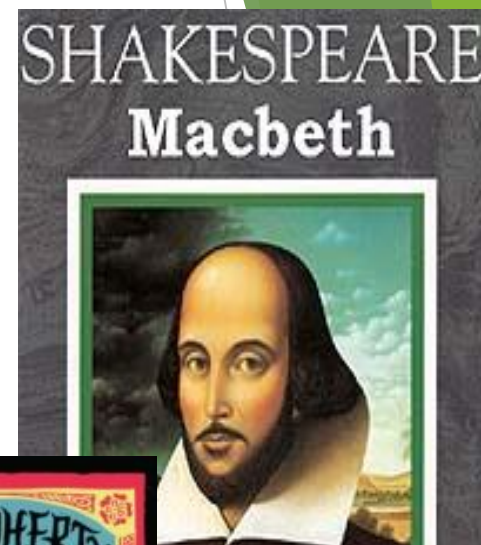
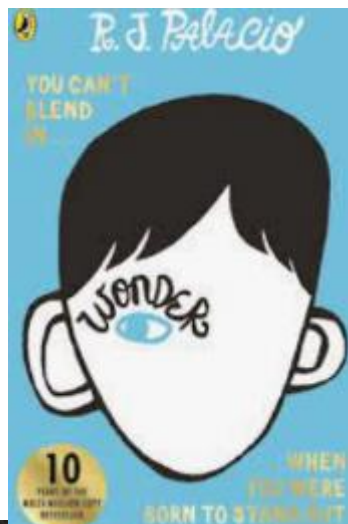
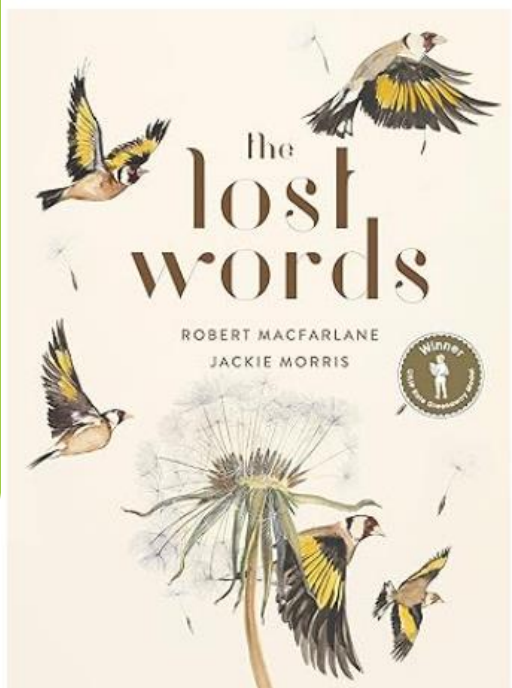
Year 6 receive a broad and balanced curriculum, with a focus on developing and securing English and Math's skills and ensuring 'secondary readiness'.

They will also study the following curriculum areas:

- Science, Art and Design, Computing, Design and Technology, German, Geography, History, Music, Physical Education including swimming and PSHE. The teaching of Religious Education is statutory in all schools, and we follow the Walsall Agreed Syllabus.

Events to promote cultural capital such as the Shakespeare Macbeth workshop, Split Second workshop, Bikeability and the Life Education bus will also support the Year 6 curriculum.

These are some of the English texts studied and analysed in Year 6



English incorporates Reading, Writing, Spoken language, Grammar, Spellings and Punctuation.

Throughout the year, teachers continually assess and analyse the individual needs of all the children in the year group.

All relevant topics will be planned for in line with the National Curriculum for Year 6.

Maths Framework

1. Number and place value.
2. Addition, subtraction, multiplication and division (calculations).
3. Fractions, decimals and percentages.
4. Ratio and proportion.
5. Algebra.
6. Measurement.
7. Geometry - properties of shapes.
8. Geometry - position and direction.
9. Statistics (data).

Science topics

Autumn 1: Light Theory

Autumn 2: Electricity Circuits and Components

Spring 1: Living Things and their Habitats

Spring 2: Circulatory system (Animals including humans)

Summer: Darwin's Delights (Evolution and adaptation)

Religious Education



Exploring Key Leaders - Sikhs and Hindus

Values - What matters most?

What can be done to reduce racism?

What can we learn from religions about temptation?

How do we express spiritual ideas through arts?



Homework

This will be shared on the class page on Dojos.

Maths, English and Spelling homework will be set on the year group and class pages

Daily - Home Reading

Weekly - Spellings (Y5/6 words issued) and times tables

Topics over the Year

Off with Her
Head
History

Our Changing
World
Geography

Maafa
History

Reading

Children read to an adult in school 2 to 3 times a week:

Individual read

'Whole Class Read' - taught session

Guided Reading is used to further challenge your child's reading and discuss aspects of the text.

Please encourage your children to read other books as much as possible at home. All home reading can be logged on 'BoomReader' by children and parents

Children can also log on to Oxford Reading Buddy, a great online reading tool.

Rewards

Children are praised when they follow the school and classroom expectations.

We encourage the:

- Readiness to learn.
- Respect.
- Responsibility.
- Safety

Dojo points

House points

Once they have completed their house point book, they visit Mrs Arnold for special recognition and choose an item from the 'Achievement Shop'. Each child's name goes into a Prize Draw at the end of each half term.

The house points are counted up and the winning house is announced in Recognition Assembly on a weekly basis.

Rewards

Raffle tickets are awarded to children over the week for any good behaviour and then a name is 'pulled from the pot' for a special treat the following week.

Teachers also choose a "Star of the week" this child is also allowed special privileges and recognition.

Children can be nominated for a merit as a special notification for something above the usual expectations or where they have shown good attitude/responsibility and improvements are also noted.

Areas of Responsibility - promoting independence

Year 6 have special responsibilities.

Head Ambassadors

Deputy Head Ambassadors

House Captains.

Vice House Captains.

Librarians

Young Leaders

Bench Monitors

Office Monitors

Reading Ambassadors are also chosen by the class teacher

Residential

The Year 6 Residential to Laches Wood will take place from **Wednesday 5th February - Friday 7th February 2025**. Further details will follow. The letters have now been sent out to parents.

There will be a Parents Meeting on **Monday 13th January 2025 at 5:00pm**. Further information will follow.



Any Questions?

Thank you for attending



PHEASEY PARK FARM
Primary School &
Early Years Centre